

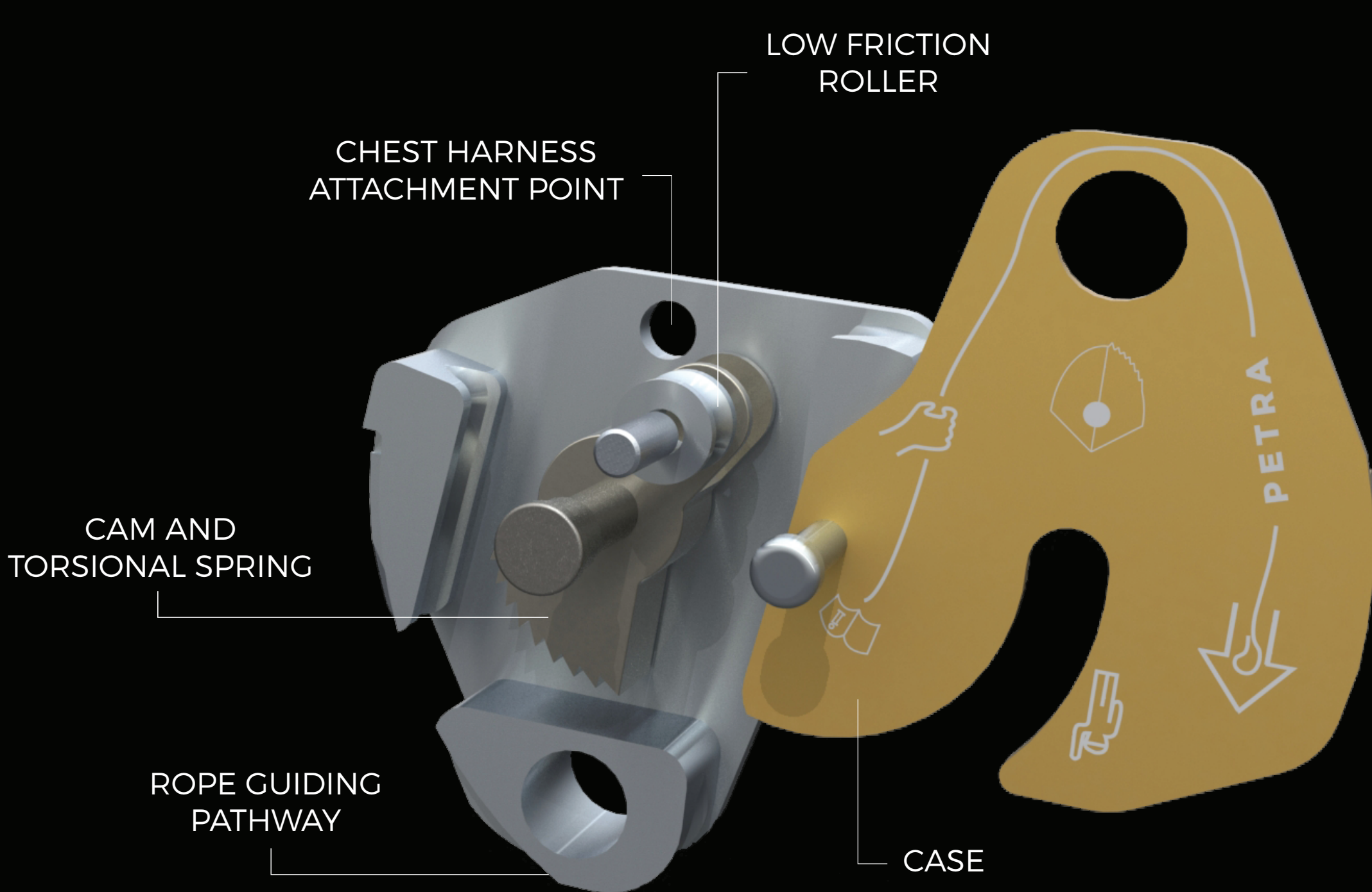


EXPAND YOUR BORDERS

An **all-in-one** belaying, rappelling, and ascending device with an **automatic fall prevention feature** for cavers, canyoneers, and climbers.



PRODUCT FEATURES



SPECIFICATIONS

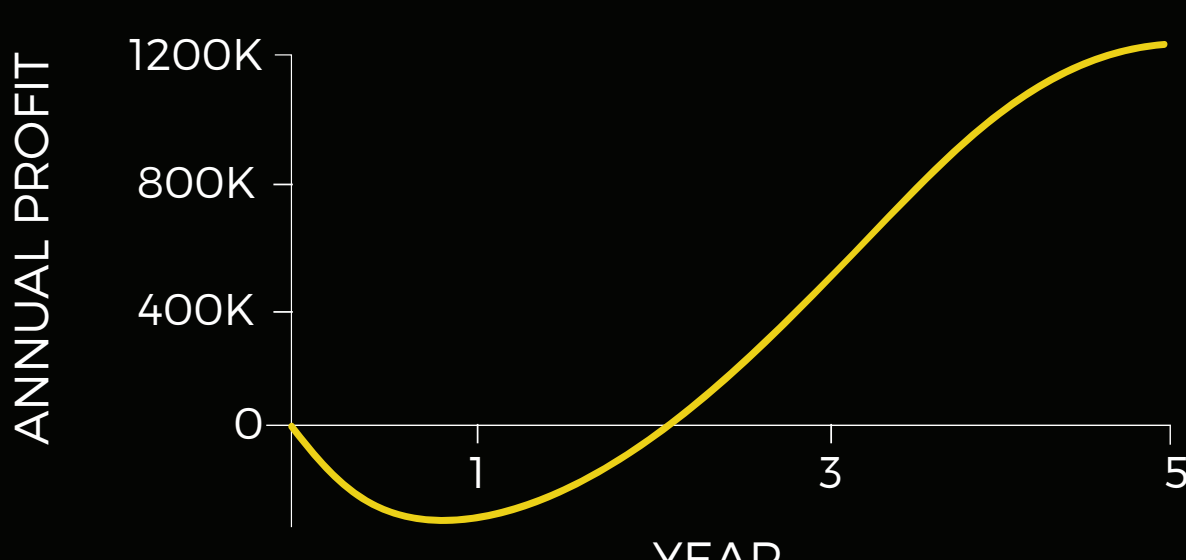
Size	77 x 90 x 30 mm
Weight	260 g
Static load	4 kN
Dynamic load	110 kg at 3 m/s
Max allowable speed	3 m/s

SIMPLE

LIGHTWEIGHT

RELIABLE

OUR PROPOSAL



Petra is **patent pending**

Initial investment of **\$825,000**

Breakeven before year **3**

Capture **7%** of market by year 3



500,000 CAVERS
CANYONEERS, CLIMBERS



4% PROJECTED
GROWTH RATE IN
EQUIPMENT MARKET



2 for 1 DEVICE:
COMBINES RAPPELLER
AND ASCENDER

THANK YOU

Instructors:

Jared Berezin
Danny Braunstein
Chip McCord
David Wallace

Mentors:

Teresa Lin
David Perry
Robin Miller
David Tardiff

Lab Staff:

Bill Cormier
James Dudley
Steve Haberek
Tasker Smith

Special thanks to:

Austin O'Brien
Dave Guster
Hunter Guarino
Pierce Hayward
Tom Jones

Emmett Krupczak
Libby Mahaffy
David Meeker
MIT Caving Club
Peter Schmidt-Nielson

Warren Seering
Mark Shortt
Scott Spence
Ron Wiken
Emily Young

YELLOW TEAM

Skyler Adams
Faisal Alaskar
Abdulrahman Alhabidi
Deron Brown
Christopher Chapman
Paul Cohen
Tony DiBlasi
Isabella DiDio
Langston Fitts
Graham Francis
Paige Grody

Milly Helmick
Jonah Hessels
Julia Huang
Danny Joh
Tobi Rudoltz
Lauren St. Hilaire
Emma Steinhardt
Victoria Tam
Kate Tatar
James Tsao
Lena Yang

Contact us at: 2009yellow@mit.edu



EXPAND YOUR BORDERS

